



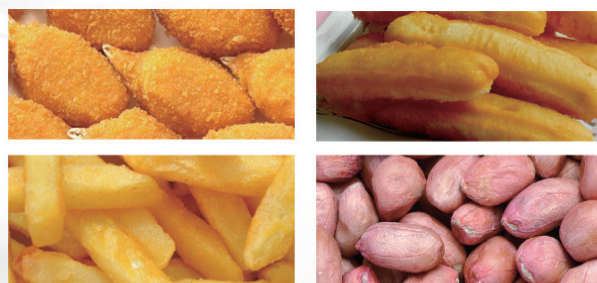
OS2700 Cooking Oil Tester

Cooking oil is the mainly energy and nutrition source, and the cooking material for daily life. Fried food is also favored as its unique taste. With physical and chemical reaction during the high-temp cooking process, toxic chemicals will be produced. Currently, the traditional testing method on cooking oil is mainly chemical method which is commonly used and conducted by professionals in the lab. But the laboratory process always produces pollution and unnecessary waste. The Total Polar Material (TPM) values is the only acceptable standard which used for cooking oil testing. OS2700 is designed for cooking oil testing with safety and efficiency. It is able to test total polar material (TPM) values in minutes and suitable for all kinds of cooking oil within high operation temperature.

OS2700 Cooking Oil Tester is especially suitable for quality supervision, refectory, fast-food restaurants, food manufacturers, bakeries and so on. It is also used for cooking oil quality' s preliminary inspection in lab. This tester aims to achieve the application and inspecting on oil quality, save cooking oil, and ensure the safety of cooking oil.

Characteristics:

- Easy operation, field testing, suitable for a variety of testing conditions.
- Fast measurement, getting result within 15 seconds with sound-light alarm.
- Adopting food-grade materials, safety and eco-friendly for probes.
- Waterproof design, class IP65.
- Using AAA battery, 500 times measurement.
- Adopting streamlined design, according to
- Ergonomics, easy handling and preventing it to fall apart.
- Special design for probe in order to reduce residual oil and easy for clean.



Technical Data

Temperature measure range	10.0~200°C (50-392°F)
Temperature resolution	± 0.1°C
Temperature accuracy	± 1.0°C
TPM measure range	0.5~40%
TPM accuracy	±2%
TPM resolution	±0.1%
Temperature sensor	PTC Sensor
TPM sensor	Capacitive sensor
TPM response time	<15S
LED status alert	Green, Orange , Red
Operating temperature	0~+50 °C
Storage temperature	-20~+70 °C
Display	LCD display
Housing material	ABS
Probe material	Food-grade stainless steel
Protection grade	IP65
Power supply	2 units AAA batteries
Battery life below 20 °C	About 25 hours of continuous use time the corresponding measuring 500 times
Dimension	367mmX48mmX24mm
Weight (with the probe cases)	165g

Elemental Series

